

basel museums guide

ENGLISH

.....
2012

.....
**TEMPORARY AND
PERMANENT EXHIBITIONS**
.....

Basel+

Culture Unlimited.

SURVEY

1	ANATOMISCHES MUSEUM DER UNIVERSITÄT BASEL, ANATOMY	04
2	ANTIKENMUSEUM UND SAMMLUNG LUDWIG, ANCIENT ART	04
	AUGUSTA RAURICA, AUGST, ROMAN TOWN	05
3	AUSSTELLUNGSRAUM KLINGENTAL, ART SPACE	06
4	BASLER PAPIERMÜHLE, HISTORY OF PAPER, WRITING AND PRINTING	06
5	CARTOONMUSEUM BASEL, CARICATURES, CARTOONS	06
6	FONDATION BEYELER, RIEHEN/BASEL, FINE ARTS	07
8	HAUS FÜR ELEKTRONISCHE KÜNSTE BASEL, ELECTRONIC ART	09
9	HISTORISCHES MUSEUM BASEL: BARFÜSSERKIRCHE	
	ART AND HISTORY OF THE UPPER RHINE	10
10	HISTORISCHES MUSEUM BASEL: HAUS ZUM KIRSCHGARTEN	
	LIVING CULTURE	11
11	HISTORISCHES MUSEUM BASEL: KUTSCHENMUSEUM COACHES, SLEIGHS	11
12	HISTORISCHES MUSEUM BASEL: MUSIKMUSEUM, MUSICAL INSTRUMENTS	11
13	JÜDISCHES MUSEUM DER SCHWEIZ, JEWISH CULTURE AND HISTORY	12
14	KUNST RAUM RIEHEN, ART SPACE	12
15	KUNSTHALLE BASEL, CONTEMPORARY ART	12
16	KUNSTMUSEUM BASEL, FINE ARTS	13
16	KUNSTMUSEUM BASEL, KUPFERSTICKKABINETT UND BIBLIOTHEK	
	DRAWINGS, PRINTS, BOOKS	16
17	KUNSTMUSEUM BASEL, MUSEUM FÜR GEGENWARTSKUNST	
	CONTEMPORARY ART	16
18	MÜHLEMUSEUM BRÜGLINGEN, MÜNCHENSTEIN/BASEL	
	MILLS, CEREAL PROCESSING	18
	MUSEUM.BL, LIESTAL, CULTURAL HISTORY, EVERYDAY LIFE	18
19	MUSEUM AM BURGHOF, LÖRRACH, HISTORY OF THE BORDER REGION	18
20	MUSEUM DER KULTUREN BASEL, ETHNOLOGY	19
	MUSEUM FÜR MUSIKAUTOMATEN, SEEWEN, MECHANICAL MUSIC	20
21	MUSEUM KLEINES KLINGENTAL, MEDIEVAL SCULPTURE FROM BASEL CATHEDRAL	20
22	MUSEUM TINGUELY, MODERN ART	20
23	NATURHISTORISCHES MUSEUM BASEL, NATURAL HISTORY	22
24	PHARMAZIE-HISTORISCHES MUSEUM DER UNIVERSITÄT BASEL	
	PHARMACEUTICAL HISTORY	22
25	PUPPENHAUSMUSEUM, TEDDY BEARS, DOLLS, DOLL HOUSES	23
26	S AM SCHWEIZERISCHES ARCHITEKTURMUSEUM, ARCHITECTURE, DESIGN	
	AND URBANISM	23
27	SAMMLUNG FRIEDHOF HÖRNLI, RIEHEN/BASEL, FUNERAL OBJECTS	24
28	SCHAULAGER, MÜNCHENSTEIN/BASEL, CONTEMPORARY ART	24
29	SCHWEIZERISCHES FEUERWEHRMUSEUM BASEL, FIRE-FIGHTING	24
30	SKULPTURHALLE BASEL, PLASTER CASTS OF ANCIENT SCULPTURES	25
31	SPIELZEUGMUSEUM, DORF- UND REBBAUMUSEUM RIEHEN	
	TOYS, LOCAL HISTORY, VINICULTURE	25
32	SPORTMUSEUM SCHWEIZ, SPORT	25
33	VERKEHRSDREHSCHIEBE SCHWEIZ UND UNSER WEG ZUM MEER	
	SHIPPING, TRANSPORT	26
34	VITRA DESIGN MUSEUM, WEIL AM RHEIN, DESIGN, ARCHITECTURE	26
	CITY MAP	30

HIGHLIGHTS 2012

**2 ANTIKENMUSEUM BASEL UND SAMMLUNG LUDWIG
PETRA. WONDER IN THE DESERT. IN THE FOOTSTEPS OF
J. L. BURCKHARDT ALIAS SHEIKH IBRAHIM AUTUMN 2012 05**

**6 FONDATION BEYELER
PIERRE BONNARD 29.01.–13.05.2012 07
JEFF KOONS 13.05.–02.09.2012 08
EDGAR DEGAS 30.09.2012–27.01.2013 08**

**9 HISTORISCHES MUSEUM BASEL: BARFÜSSERKIRCHE
GUILTY – CRIME. PUNISHMENT. PEOPLE. 20.09.2012–07.04.2013 10**

**16 KUNSTMUSEUM BASEL
RENOIR. BETWEEN BOHEMIA AND BOURGEOISIE:
THE EARLY YEARS 01.04.–12.08.2012 14**

NATIONALGALERIE, STAATLICHE MUSEEN ZU BERLIN



Auguste Renoir: *In Summer* (1868)

**ARTE POVERA. WORKS FROM THE
GOETZ COLLECTION 09.09.2012–20.01.2013 15
MARKUS RAETZ. DRAWINGS 20.10.2012–17.02.2013 14**

**17 KUNSTMUSEUM BASEL, MUSEUM FÜR GEGENWARTSKUNST
ROBERT GOBER 06.10.2012–27.01.2013 17**

**20 MUSEUM DER KULTUREN BASEL
PILGRIMS 30.08.2012–03.03.2013 19**

**22 MUSEUM TINGUELY
KIENHOLZ. THE SIGNS OF THE TIMES 22.02.–13.05.2012 20
TATLIN. NEW ART FOR A NEW WORLD
06.06.–14.10.2012 21**

**34 VITRA DESIGN MUSEUM
GERRIT RIETVELD – THE REVOLUTION OF SPACE
17.05.–16.09.2012 26
POP ART DESIGN. ICONS OF CONSUMERISM
28.09.2012 – 03.02.2013 27**

1 ANATOMISCHES MUSEUM DER UNIVERSITÄT BASEL

[HTTP://ANATOMIE.UNIBAS.CH/MUSEUM](http://anatomie.unibas.ch/museum)

PESTALOZZISTRASSE 20, 4056 BASEL | T +41 (0)61 267 35 35

MON-FRI 14-17 H; SUN 10-16 H | CHF 5.-/3.-

COMBINED TICKET WITH PHARMAZIE-HISTORISCHES MUSEUM DER UNIVERSITÄT BASEL CHF 8.-/5.-

TRAM 11 > ST. JOHANN-S-TOR, BUS 30 > KINDERSPITAL UKBB OR BUS 36/38 > METZERSTRASSE



The museum owns a large collection of models which have played an important role in the history of anatomical science – for example the first recorded anatomical model, a skeleton of 1543. Original dissections of human body parts and organs. Prenatal development of the human body.

2 ANTIKENMUSEUM BASEL UND SAMMLUNG LUDWIG

[WWW.ANTIKENMUSEUMBASEL.CH](http://www.antikenmuseumbasel.ch)

ST. ALBAN-GRABEN 5, 4010 BASEL | T +41 (0)61 201 12 12

TUE-SUN 10-17 H | CHF 10.-/5.- (EXCLUDING TEMPORARY EXHIBITIONS)

TRAM 2/15 > KUNSTMUSEUM



PHOTO: A. VOGELIN



The so-called Treasury in Petra

The Basel Museum of Ancient Art is the only Swiss museum devoted exclusively to the ancient civilizations of the Mediterranean region. The permanent exhibition contains ancient art mainly from the Egyptian, Greek, Italic, Etruscan and Roman cultures. Located in the heart of the city of Basel, the museum is a place where the ancient world is regularly cast in a new light.

SEX, DRUGS AND MUSIC. ECSTASY AND TRANCE IN ANTIQUITY

> 29.01.2012

PETRA. WONDER IN THE DESERT. IN THE FOOTSTEPS OF J. L. BURCKHARDT ALIAS SHEIKH IBRAHIM AUTUMN 2012

Exactly 200 years ago this year, the Swiss-born explorer Johann Ludwig Burckhardt, alias Sheikh Ibrahim, rediscovered the city of Petra: a wonder in the Jordanian desert that had been forgotten by the outside world for centuries. Burckhardt's rediscovery opened the way for the exploration of the mysterious city, which today is a UNESCO World Heritage Site. Petra was the capital of the Nabataeans, an ancient nomadic people who settled in the desert more than 2000 years ago. The exhibition highlights the results of the latest archaeological research, conducted with Swiss involvement. Loaned artefacts from Jordan, accompanied by video and virtual reality and models showcase the origins of the Nabataeans, how they prospered and which gods they worshipped. Visitors discover how a nomadic people managed to build and supply water to a city of huge buildings in what is today one of the most arid areas of the world.

AUGUSTA RAURICA

WWW.AUGUSTA-RAURICA.CH

GIEBENACHERSTRASSE 17, 4302 AUGST | T +41 (0)61 816 22 22

MARCH-OCT.: MON 13-17 H, TUE-SUN 10-17 H

NOV.-FEB.: MON 13-17 H, TUE-SUN 11-17 H | CHF 7.-/5.-

OPEN-AIR SITES, ROMAN ANIMAL PARK AND COVER BUILDINGS

DAILY 10-17 H

TRAIN S1 FROM BASEL SBB > KAISERAUGST OR BUS 70 FROM BASEL

AESCHENPLATZ > AUGST



Off to visit the Roman period! The largest archaeological park in Switzerland offers more than thirty surprising, unique and exciting sights including the most impressive Roman theatre north of the Alps, the atmospheric Roman house and, on display in the museum, the largest collection of Late Antique silver.

AD PORTAS! 29.03.2012-01.2014

Ruins and a panoramic view of the historical skyline at the entrance to the Roman metropolis evoke life 1800 years ago. They invite you to take an enjoyable and educational walk in the newly designed park outside the gates of the ancient town.

3 AUSSTELLUNGSRAUM KLINGENTAL

WWW.AUSSTELLUNGSRAUM.CH

KASERNENSTRASSE 23, 4058 BASEL | T +41 (0)61 681 66 98

TUE-FRI 15-18 H; SAT, SUN 11-17 H | FREE ADMISSION

TRAM 8 > KASERNE



Ausstellungsraum Klingental presents contemporary art originating in the region of Basel. Avant-garde exhibitions, internationally networked projects, events and film nights promise interesting viewing. Founded in 1974, the exhibition room is directed by a periodically renewed team of dedicated artists and guest curators.

4 BASLER PAPIERMÜHLE

WWW.PAPIERMUSEUM.CH

ST. ALBAN-TAL 37, 4052 BASEL | T +41 (0)61 225 90 90

TUE-FRI, SUN 11-17 H, SAT 13-17 H

CHF 14.-/12.-/9.-, FAMILIES 30.-/36.-

TRAM 2/15 > KUNSTMUSEUM



Housed in a medieval paper mill, the museum offers a mixture of exhibits and production workshops with a fascinating atmosphere. The Basler Papiermühle is one of the few museums in Europe to cultivate and preserve historic techniques in genuine surroundings. In 2011 the mill building underwent thorough restoration. The permanent display was likewise thoroughly renewed and enlarged. A new visitor management plan was introduced, with a more attractive configuration.

5 CARTOONMUSEUM BASEL

WWW.CARTOONMUSEUM.CH

ST. ALBAN-VORSTADT 28, 4052 BASEL | T +41 (0)61 226 33 60

TUE-FRI 14-18 H; SAT/SUN 11-18 H | CHF 9.-/7.-

TRAM 2/15 > KUNSTMUSEUM



The Cartoonmuseum Basel is the only museum of its kind devoted exclusively to satirical art – from caricature to comic. Varying, attractively designed exhibitions on political and social themes show the considerable scope of humorous drawing. Equal attention is paid to classical and contemporary works.

6 FONDATION BEYELER

WWW.FONDATIONBEYELER.CH

BASELSTRASSE 101, 4125 RIEHEN/BASEL | T +41 (0)61 645 97 00

DAILY 10–18 H; WED 10–20 H | CHF 25.–/20.–/12.–/6.–

TRAM 6 > FONDATION BEYELER OR TRAIN S6 FROM THE BASEL SBB

RAILWAY STATION > RIEHEN



By building Renzo Piano's museum in 1997, the Fondation Beyeler made its collection accessible to the public. The 230 or so works reflect the views of Hildy and Ernst Beyeler on 20th-century art and highlight features typical of the period: from Monet, Cézanne and van Gogh to Picasso, Warhol, Lichtenstein and Bacon. The paintings appear alongside some objects of tribal art from Africa, Oceania and Alaska.

DALÍ, MAGRITTE, MIRÓ – SURREALISM IN PARIS > 29.01.2012

PIERRE BONNARD 29.01.–13.05.2012

Pierre Bonnard (1867–1947) was an outstanding colourist. In his paintings, Bonnard represented the entire range of sensory impressions through sheer colour, drawing his favourite subjects from his immediate personal surroundings. The retrospective includes about 60 paintings that reflect the bustling life of the streets of Paris, the intimate tranquillity of his home with his wife, Marthe, on the Côte d'Azur, and views of his garden.

CENTRE GEORGES POMPIDOU, MNAM/CCI, PARIS, © 2011, PROLITTERIS, ZÜRICH



Pierre Bonnard: *Nu à la baignoire (sortie du bain)* (1931)



Jeff Koons: *Ushering in Banality* (1988)

JEFF KOONS 13.05.–02.09.2012

Jeff Koons (b. 1955) is one of the best-known and popular artists of the present day, who has repeatedly caused furore since the 1980s with art that draws on pop culture. The Fondation Beyeler's Koons exhibition is the first ever to be shown in Switzerland. It focuses on three extensive groups of works from different periods, each of which has lastingly shaped the development of Koons's oeuvre.

EDGAR DEGAS 30.09.2012–27.01.2013

With van Gogh, Cézanne and Gauguin, Edgar Degas (1834–1917) is considered one of the major pioneers of modern art. After putting Impressionism behind him in about 1880, Degas reached the undoubted culmination of his art in his unique late work. The comprehensive exhibition is devoted to this late work with its abundance of techniques and motifs. The display features renowned depictions of dancers and jockeys, female nudes and landscapes.



Edgar Degas: *Trois danseuses, jupes violettes* (1896), private collection



Edgar Degas: *Trois danseuses, jupes bleues, corsages rouges* (around 1903)

18 HAUS FÜR ELEKTRONISCHE KÜNSTE BASEL

WWW.HAUS-EK.ORG

OSLOSTRASSE 10 (DREISPITZ, GATE N° 13) | T +41 (0)61 331 58 40

WED–SUN 13–17 H | FREE ADMISSION

TRAM 10/11 OR BUS 36 > DREISPITZ



The Basel House of Electronic Arts is a museum of contemporary art and music deploying electronic media and reflecting their use. The new House organizes the activities of the forum for new media [plug.in] and the festival of the electronic arts Shift. It also deals with the conservation, archiving and documentation of digital art.

9 HISTORISCHES MUSEUM BASEL:

BARFÜSSERKIRCHE

WWW.HMB.CH

BARFÜSSERPLATZ, 4051 BASEL | T +41 (0)61 205 86 00

TUE-SUN 10-17 H | CHF 7.-/5.- (EXCLUDING TEMPORARY EXHIBITIONS)

TRAM 3/6/8/11/14/16 > BARFÜSSERPLATZ OR TRAM 10

> THEATER



The Historisches Museum Basel is housed in four separate buildings and ranks among the most important museums of cultural history on the Upper Rhine. The permanent exhibition spotlights Basel's historic identity at the crossroads between three cultures: Swiss, German and French. Several hundred historical accounts and art works trace aspects of the city's history over the last thousand years. Among the highlights are fragments of the Basler Totentanz (Dance of Death) and the Basel Cathedral treasure. The tapestries from Basel illustrate both medieval fantasy worlds and scenes of everyday life. The Renaissance and Baroque collections feature the "Kunstkammer" or collection of curiosities as a world model, while another section is devoted to the region's rich archaeological heritage.

GUILTY – CRIME. PUNISHMENT. PEOPLE. 20.09.2012–07.04.2013

Guilty or not guilty, lawful or unlawful: our perceptions of criminals and crime are changing all the time. Some types of behaviour that were once outlawed have now been decriminalized. Others, such as murder, have always been indictable offences. This exhibition looks at criminality, crime and criminal justice through the ages. It takes visitors on a journey through legal history passing several milestone cases en route. These include the arraignment of a cockerel, various cases of infanticide, witch trials and rebellion. There are high-profile crimes such as the bank robbery committed by Sandweg and Velte and even large police operations, as during the 1969 tram sit-in.

PHOTO: HMB MAURICE BABEY



Basel death-sentence staff with skull, Basel (17th century)

10 HISTORISCHES MUSEUM BASEL:

HAUS ZUM KIRSCHGARTEN

WWW.HMB.CH

ELISABETHENSTRASSE 27–29, 4051 BASEL | T +41 (0)61 205 86 78

TUE–FRI, SUN 10–17 H; SAT 13–17 H | CHF 7.–/5.–

(EXCLUDING TEMPORARY EXHIBITIONS)

TRAM 2 > KIRSCHGARTEN



The magnificent Haus zum Kirschgarten – built between 1775 and 1780 as the home and office of a Basel silk ribbon manufacturer – is one of Switzerland’s principal museums of domestic life. Laid out on two floors, period rooms depict life in 18th and 19th-century Basel. Special collections of international significance are also on display: the porcelain collection of the Pauls-Eisenbeiss Foundation, the Nathan-Rupp and Dr. Eugen Gschwind watch and clock collections, toys, Basel silver and a number of scientific instruments.

11 HISTORISCHES MUSEUM BASEL:

KUTSCHENMUSEUM

WWW.HMB.CH

BARN NEAR THE VILLA MERIAN IN BRÜGLINGEN/ST. JAKOB,

4051 BASEL | T +41 (0)61 205 86 00

WED, SAT, SUN 14–17 H | FREE ADMISSION

TRAM 10 > NEUEWELT, TRAM 14/BUS 36 > ST. JAKOB OR REGIONAL TRAIN S3
> BASEL DREISPITZ



Coaches and sleighs of the 19th and 20th centuries belonging to Basel families. Hunting carriages, dog carts, phaetons, coupés and landaus attest to the excellent workmanship of Basel’s coach builders.

12 HISTORISCHES MUSEUM BASEL: MUSIKMUSEUM

WWW.HMB.CH

IM LOHNHOF 9, 4051 BASEL | T +41 (0)61 264 91 60

WED–SAT 14–18 H; SUN 11–17 H | CHF 7.–/5.–

TRAM 3 > MUSIKAKADEMIE



Switzerland’s largest collection of musical instruments is on display in the historic Lohnhof building. The triple-themed display “Music in Basel”, “Concerto, Chorale and Dance” and “Parade, Ceremony and Signals” shows musical instruments from five centuries, some in their musical and social contexts and others grouped according to musical genres or to occasions. Visitors can also hear how the instruments sound: from musical excerpts on screen.

13 JÜDISCHES MUSEUM DER SCHWEIZ

WWW.JUEDISCHES-MUSEUM.CH

KORNHAUSGASSE 8, 4051 BASEL | T +41 (0)61 261 95 14

MON, WED 14–17 H; SUN 11–17 H | FREE ADMISSION

TRAM 3 OR BUS 30/34 > UNIVERSITÄT



The Jewish Museum of Switzerland shows one of the best collections of Judaica in central Europe. It exhibits valuable silverware for divine service and special occasions and offers an introduction to Jewish life and the Jewish history of the region.

14 KUNST RAUM RIEHEN

WWW.KUNSTRAUMRIEHEN.CH

AT THE BEROWERGUT, BASELSTRASSE 71, 4125 RIEHEN |

T +41 (0)61 641 20 29

WED–FRI 13–18 H; SAT, SUN 11–18 H | FREE ADMISSION

TRAM 6 > FONDATION BEYELER



Kunst Raum Riehen, nextdoor to the Fondation Beyeler, shows temporary exhibitions of all genres of contemporary art.

15 KUNSTHALLE BASEL

WWW.KUNSTHALLEBASEL.CH

STEINENBERG 7, 4051 BASEL | T +41 (0)61 206 99 00

TUE, WED, FRI 11–18 H; THU 11–20.30 H; SAT, SUN 11–17 H

CHF 10.–/6.– INCL. S AM SCHWEIZ. ARCHITEKTURMUSEUM

TRAM 2/3/8/10/11/14 > BANKVEREIN OR 6/10/16 > THEATER



The Kunsthalle Basel, which opened in 1872, is a leading gallery of international contemporary art. It has a long tradition of promoting the avant-garde and stretching the accepted boundaries of contemporary art. Additional reflections on contemporary art are provided through lectures, performances, videos and films.

16 KUNSTMUSEUM BASEL

WWW.KUNSTMUSEUMBASEL.CH

ST. ALBAN-GRABEN 16, 4010 BASEL | T +41 (0)61 206 62 50

TUE–SUN 10–18 H | CHF 15.–/8.– (EXCLUDING TEMPORARY EXHIBITIONS)

COMBINED TICKET KUNSTMUSEUM & MUSEUM FÜR GEGENWARTSKUNST

CHF 25.–/20.–, INCL. TEMPORARY EXHIBITIONS

TRAM 2/15 > KUNSTMUSEUM



Basel's Fine Arts Museum makes a strong showing in Upper Rhenish and Flemish paintings and drawings from 1400 to 1600 and in 19th to 21st-century international art. The museum has the world's largest collection of works by the Holbein family. The Renaissance collection includes major works by Witz, Cranach the Elder, Grünewald and others. Paintings by Böcklin, van Gogh, Gauguin and Cézanne feature strongly among the 19th-century exhibits. The focal points of 20th-century art on display are Cubism (Picasso, Braque and Léger), German Expressionism and American art since 1950.

MAX BECKMANN. THE LANDSCAPES >22.01.2012

ROZA EL-HASSAN – IN BETWEEN. DRAWINGS AND OBJECTS

11.02.–20.05.2012



Auguste Renoir: *Femme dans un jardin* (1868)

**RENOIR. BETWEEN BOHEMIA AND BOURGEOISIE:
THE EARLY YEARS 01.04.–12.08.2012**

In the early 1870s, Auguste Renoir was among the French painters who founded Impressionism. With bright palette, loose brushwork and motifs from modern urban life and social recreation in natural settings, he and his fellow innovators wrote art history. The Kunstmuseum Basel now presents a grand survey exhibition, the first show to focus on the artist's surprisingly complex early work, up to and including the first eminent Impressionist paintings. Renoir's most important model during these early years was his lover, Lise Tréhot.

MARKUS RAETZ. DRAWINGS 20.10.2012–17.02.2013

Markus Raetz (b. 1941) is the most renowned Swiss contemporary artist of his generation. After participating in the 1968 and 1972 documentas in Kassel, he has shown his art internationally. In addition to a close engagement with drawing, the artist's oeuvre spans a wide variety of media (sculptures, installations, kinetic objects, etc.), with a consistent focus on the phenomenon of perception. It is not what is represented that matters most, but a particular way of looking at it. Working in close collaboration with the artist, we have produced this first retrospective of his paper works, which also offers delightful insights into his sketchbooks.

©2011, PROLITTERIS, ZÜRICH



Markus Raetz: *Geschwebe (Serie von neun Blättern)* (1976)

ARTE POVERA. WORKS FROM THE GOETZ COLLECTION

09.09.2012–20.01.2013

In 1960s Italy, emerging artists such as Alighiero Boetti, Luciano Fabro, Jannis Kounellis, Mario Merz and Michelangelo Pistoletto formed a new movement destined for fame. The distinctive feature of their art is the use of simple means and humble materials. In stylistic anarchy, pictures, objects, installations and performances seek to find a way back to natural processes and laws. The exhibition features numerous key works from the collection which Ingvild Goetz has built over many years and which attracts strong interest nowadays.



Luciano Fabro: *L'Italia d'oro* (1971), collection Goetz

16 KUNSTMUSEUM BASEL, KUPFERSTICHKABINETT UND BIBLIOTHEK

WWW.KUNSTMUSEUMBASEL.CH

ST. ALBAN-GRABEN 16, 4010 BASEL | T +41 (0)61 206 62 50

LIBRARY: TUE–SAT 10–17 H; PRINTS AND DRAWINGS COLLECTION/

STUDY ROOM: TUE–SAT 10–12 H AND 14–17 H, VISIT OF STUDY ROOM

ONLY BY ADVANCE NOTICE, T +41 (0)61 206 63 50

With 60,000 drawings and watercolours, 250,000 prints and engravings, the Kupferstichkabinett of the Kunstmuseum Basel is not only the biggest one in Switzerland, it also houses one of the world's most important collections of its kind. Highlights are works by the Holbein family, Cézanne and 20th-century artists.

17 KUNSTMUSEUM BASEL, MUSEUM FÜR GEGENWARTSKUNST

WWW.KUNSTMUSEUMBASEL.CH

ST. ALBAN-RHEINWEG 60, 4052 BASEL | T +41 (0)61 206 63 50

TUE–SUN 11–18 H

CHF 15.–/12.–/5.– COMBINED TICKET KUNSTMUSEUM & MUSEUM FÜR

GEGENWARTSKUNST CHF 25.–/20.–, INCL. TEMPORARY EXHIBITIONS

TRAM 2/15 > KUNSTMUSEUM



The Museum für Gegenwartskunst is a place of engagement with the variety of contemporary artistic output and practice. It shows contemporary art from the holdings of the Kunstmuseum Basel and the Emanuel Hoffmann Foundation. They engage in close dialogue with group as well as solo exhibitions of international and current artistic positions.

KARLHEINZ WEINBERGER: INTIMATE STRANGER TIM ROLLINS AND THE K.O.S. 21.01.–15.04.2012

HILARY LLOYD 05.05.–16.09.2012

The British artist Hilary Lloyd (b. 1964, lives and works in London) uses a video camera to record pictures of the modern city and its potential as a site of voyeurism and fetishism. She produces haunting and sexually ambivalent films that show people engaged in the specific rituals of their everyday lives: workmen, waiters, skaters and clubbers become the subjects of her investigation.

ROBERT GOBER 06.10.2012–27.01.2013

The oeuvre of the American artist Robert Gober (b. 1954, lives and works in New York) features replicas of domestic objects such as washbasins, sinks, fireplaces and drains, effigies of individual body parts and specific spaces with institutional or religious connotations, complemented here by a set of works selected by the artist himself. In 1995/96, Gober created the elaborate installation “Split Wall with Drains” specifically for the Museum für Gegenwartskunst. The work will now be reassembled to form the centre of the artist’s own selection plus works contained in the public art collection and the Emanuel Hoffmann Foundation’s holdings.

PHOTO: KUNSTMUSEUM BASEL, MARTIN P. BÜHLER



Robert Gober: Melted Rifle (2006), Emanuel Hoffmann Foundation

18 MÜHLEMUSEUM BRÜGLINGEN

WWW.MERIANSTIFTUNG.CH

4142 MÜNCHENSTEIN/BASEL | T +41 (0)61 226 33 33

MON-SUN 9 H UNTIL DUSK | FREE ADMISSION

TRAM 10/11 > DREISPITZ, TRAM 14 OR BUS 36 > ST. JAKOB

(ACCESS WITH CAR NOT POSSIBLE)

The 16th-century watermill houses exhibitions in its machinery and milling rooms. These portray the development of milling from Bronze Age handicraft to industrial production. The drive gear has pride of place, complete with its water wheel and gears.

MUSEUM.BL

WWW.MUSEUM.BL.CH

ZEUGHAUSPLATZ 28, 4410 LIESTAL | T +41 (0)61 552 50 90/59 86

TUE-SUN 10-17 H | CHF 7.-/5.-

TRAIN FROM BASEL SBB > LIESTAL



The Museum.BL is a modern and lively thematic museum. Its work links past with present and local with global. The themes presented bring natural sciences and the humanities together. Children, young people and adults are welcome at Museum.BL which appeals to all ages.

3, 2, 1 ... GO! ROUND TRIP TO THE UNIVERSE. AN EXPOSITION FOR CHILDREN AND FAMILIES > 31.12.2012

BULL! HOW DO WE GET TAKEN IN? 20.04.2012-30.06.2013

An interactive exhibition about lies and scams.

19 MUSEUM AM BURGHOFF

WWW.MUSEUM-LOERRACH.DE

BASLER STRASSE 143, D-79540 LÖRRACH | T +49 (0)7621 91 93 70

WED-SAT 14-17 H; SUN 11-17 H | EUR 2.00/1.00

TRAIN S6 FROM BASEL BADISCHER BAHNHOF > LÖRRACH MUSEUM/

BURGHOFF, BUS 6/16/Ü3 FROM RIEHEN GRENZE > MUSEUM



The permanent exhibition experience "ExpoTriRhena" in French and German depicts the eventful history and present of the border region where Germany, Switzerland and France meet.

ZU TISCH - À TABLE. IN ALSACE, BADEN AND SWITZERLAND. 23.09.2012-24.02.2013

20 MUSEUM DER KULTUREN BASEL

WWW.MKB.CH

MÜNSTERPLATZ 20, 4001 BASEL | T +41 (0)61 266 56 00

TUE–SUN 10–17 H | CHF 16.–/11.–

TRAM 6/8/11/14/16 > SCHIFFLÄNDE OR 2/15 > KUNSTMUSEUM



The Ethnological Museum in Basel is the largest in Switzerland. It houses one of Europe's grandest collections on European and non-European cultural life.

CHINATOWN >06.05.2012

The term "Chinatown" has become synonymous with independent, self-contained Chinese residential and commercial quarters of European, American, East and South-East Asian and African cities. But what makes a Chinatown?

A MIND OF THEIR OWN – INSPIRING ASPECTS OF ETHNOLOGY

>04.11.2012

The exhibition deals with aspects of modern ethnology: belonging, the ability to act, space, knowledge and setting. Each ethnological object has a mind of its own, its own purpose. To explore this and enjoy it, is sheer inspiration. Museums, too, have a mind of their own, which exhibitions reflect.

SUSPENDED – KINETIC SCULPTURES BY JUSTIN FISKE IN DIALOGUE WITH THE MUSEUM 26.04.–15.07.2012

PILGRIMS 30.08.2012–03.03.2013

For many centuries, people have set out on their travels to find their inner selves as they go. The pilgrimage has been rediscovered in recent years, as "pilgrim travel". The exhibition casts light on the historical and cultural background of pilgrimages and seeks to show that they represent more in present-day society than a mere leisure activity.



Holy water stoops from the pilgrimage destination Lourdes

MUSEUM FÜR MUSIKAUTOMATEN

WWW.MUSIKAUTOMATEN.CH

BOLLHÜBEL 1, 4206 SEEWEN | T +41 (0)61 915 98 80

TUE–SUN 11–18 H | CHF 15.–/6.– (INCL. GUIDED TOUR)

TRAIN FROM BASEL SBB > GRELLINGEN OR LIESTAL,

CHANGE TO POST BUS > SEEWEN MUSIKAUTOMATEN OR POST



A world-famous collection of music and movement. A delightful hour-long tour “with musical accompaniment” offers visitors the chance either to explore the universe of mechanical music or to discover the history of the Welte Company and its wonderful roll-operated Mignon instruments. Surrounded by the picturesque Jura landscape, the museum offers the additional pleasure of a restaurant and the opportunity to explore outdoors.

21 MUSEUM KLEINES KLINGENTAL

WWW.MKK.CH

UNTERER RHEINWEG 26, 4058 BASEL | T +41 (0)61 267 66 25/42

WED, SAT 14–17 H; SUN 10–17 H | FREE ADMISSION

TRAM 6/8/14/15 OR BUS 34/38 > RHEINGASSE

This museum is housed in the historic rooms of the former Klingental Dominican convent and features original medieval sculptures from Basel Cathedral, a 17th-century model of the city and the history of the convent itself.

22 MUSEUM TINGUELY

WWW.TINGUELY.CH

PAUL SACHER-ANLAGE 1, 4058 BASEL | T +41 (0)61 681 93 20

TUE–SUN 11–18 H | CHF 15.–/10.–



BUS 31/36/38 > TINGUELY-MUSEUM

The Museum Tinguely, built to plans by the Ticinese architect Mario Botta, houses the greatest collection of works by Jean Tinguely (1925–1991), one of the most innovative and important Swiss artists of the 20th century. The permanent exhibition presents a survey of his oeuvre spanning four decades. Regular special exhibitions show a wide range of artists and subjects based on Tinguely’s ideas.

KIENHOLZ. THE SIGNS OF THE TIMES 22.02.–13.05.2012

The oeuvre created by the American concept and object artist Edward Kienholz (1927–1994) from the mid-1950s onwards is polarizing and rebellious. Central to his work, from 1972 executed with his fourth wife, Nancy Reddin Kienholz, are religion, war, death, sex and the seamy side of society. Contemporaries Kienholz and Tinguely shared a bond of friendship and respect for the (differing) radicalisms of their respective artistic outputs.



Edward Kienholz: The Commercial No. 2 (1971–1973)



The collective of Tatlin's studio in front of the model for the "Monument for the Third International", Petrograd, November (1920)

.....
TATLIN. NEW ART FOR A NEW WORLD 06.06.–14.10.2012
.....

Vladimir Tatlin (1885–1953) is a leading figure of the Russian avant-garde. With Tatlin, a new type of artist came into being. Reacting directly to Picasso's assemblages, he produced counter-reliefs that played an essential role in extending the concept and definition of painting. In his model for a gigantic tower, he put into practice contemporary theories related to a synthesis of architecture, visual art and social utopias.

.....
AD PETERSEN. EN BONNE COMPAGNIE. PHOTOGRAPHS OF ARTISTS 17.10.2012–27.01.2013
.....

23 NATURHISTORISCHES MUSEUM BASEL

WWW.NMB.BS.CH

AUGUSTINERGASSE 2, 4001 BASEL | T +41 (0)61 266 55 00

TUE–SUN 10–17 H | CHF 7.–/5.– EXCLUDING TEMPORARY EXHIBITIONS

TRAM 6/8/11/14/16 > SCHIFFLÄNDE OR 2/15 > KUNSTMUSEUM



Discover the archives of life. Lose yourself in the variety of our exhibitions: go back to the past, to the age of dinosaurs, even to the formation of the Earth. Experience the development of mammals, such as the mammoth and the sabre-toothed tiger. Our special exhibitions will surprise you with the fascination of nature and its secrets.

KNOCHENARBEIT. WHEN SKELETONS TELL TALES > 29.04.2012

The Basel Natural History Museum has an extraordinary collection of human skeletons. The exhibition shows how modern science works with these skeletons, and how science has succeeded in expanding their individual fates into amazing stories.

WILDLIFE PHOTOGRAPHER OF THE YEAR 29.11.2012–31.03.2013

24 PHARMAZIE-HISTORISCHES MUSEUM DER UNIVERSITÄT BASEL

WWW.PHARMAZIEMUSEUM.CH

TOTENGÄSSLEIN 3, 4051 BASEL | T +41 (0)61 264 91 11

TUE–FRI 10–18 H; SAT 10–17 H | CHF 5.–/3.–



TRAM 1/6/8/11/14/16 > MARKTPLATZ

The Museum of Pharmacy has one of the world's largest collections dedicated to the history of pharmacy. Materia medica, chemists' ceramics and furniture, alchemy laboratories, mortars, travelling pharmacies, books and the museum shop "herbarium" furnished as a historic pharmacy.

KICKSTART. CAFFEINE IN THE BLOODSTREAM 13.03.–31.07.2012

Caffeine belongs to our everyday life. It's found in food and drinks and used in cosmetic and medical products. Caffeine is popular and polarized. How does this substance move so effortlessly between addiction, pleasure and medical remedies? The exhibition shows how the first caffeinated products became so popular in the western world. It gives an insight into the complex history of caffeine research. It highlights the phenomenal success stories of energy drinks and anti-cellulite ointments.

25 PUPPENHAUSMUSEUM

WWW.PUPPENHAUSMUSEUM.CH

STEINENVORSTADT 1, 4051 BASEL | T +41 (0)61 225 95 95

MON–SUN 10–18 H | CHF 7.–/5.– FREE ADMISSION FOR CHILDREN UP TO 16,
PLEASE NOTE THAT THE LATTER ARE ONLY ALLOWED TO VISIT WHEN
ACCOMPANIED BY AN ADULT

TRAM 3/6/8/11/14/16 > BARFÜSSERPLATZ OR 10 > THEATER



The fascinating world of teddy bears, dolls, toy shops, dolls' houses and miniatures is arranged in imaginative scenes. More than 6000 exhibits occupy four floors, making this display the largest of its kind in Europe, with its fine and extensive collection of teddies. The most modern audio systems are available to people with limited hearing and to hearing aid users.

VICTORIAN CHRISTMAS. CHRISTMAS EXHIBITION > 12.02.2012

This year's Christmas exhibition is dedicated to the traditional Victorian Christmas. Three feather trees, typical of that time and more than two metres in height, are adorned with old Christmas decorations dating from the years between 1837 and 1901.

EYEWEAR. PAST, PRESENT AND FUTURE – VISION AID AND FASHION ACCESSORY > 09.04.2012

CHRISTENING AND MUCH MORE 21.04.–07.10.2012

26 S AM SCHWEIZERISCHES ARCHITEKTURMUSEUM

WWW.SAM-BASEL.ORG

STEINENBERG 7, 4051 BASEL | T +41 (0)61 261 14 13

TUE, WED, FRI 11–18 H; THU 11–20.30 H; SAT, SUN 11–17 H

CHF 10.–/6.– INCL. KUNSTHALLE BASEL

TRAM 3/6/8/11/14/16 > BARFÜSSERPLATZ OR 10 > THEATER



S AM – the Swiss Architecture Museum – enlarges our perception of architecture and urbanism by way of international and thematic exhibitions that emphasize the socio-political aspects of architectural debate.

27 SAMMLUNG FRIEDHOF HÖRNLI

HÖRNLIALLEE 70, 4125 RIEHEN | T +41 (0)61 601 50 68

1ST AND 3RD SUN EACH MONTH 10–16 H | FREE ADMISSION

BUS 31 > FRIEDHOF AM HÖRNLI



This unique collection of items from funerary culture shows that not everyone is the same, even in death. It features ash urns and documents on the history of cremation, hearses, coffins, cemetery regulations, grave crosses and memento mori.

28 SCHAULAGER

WWW.SCHAULAGER.ORG

RUCHFELDSTRASSE 19, 4142 MÜNCHENSTEIN/BASEL | T +41 (0)61 335 32 32

TRAM 11 > SCHAULAGER



Neither traditional museum nor warehouse, Schaulager creates a new type of space for art. It is the storage facility for the collection of the Emanuel Hoffmann Foundation. Intended primarily for an expert audience, Schaulager is open for researchers, scholars and students. With exhibitions and special events, Schaulager is occasionally accessible to the public.

29 SCHWEIZERISCHES FEUERWEHRMUSEUM BASEL

WWW.RETTUNG-BS.CH/MUSEUM.HTML

SPALENVORSTADT 11, 4051 BASEL | T +41 (0)61 268 14 00

SUN 14–17 H; FREE ADMISSION | GUIDED GROUP VISITS AVAILABLE

BY APPOINTMENT

TRAM 3 OR BUS 34 > UNIVERSITÄT OR BUS 30/33 > SPALENTOR

The Museum documents the history of fire-fighting, from medieval hand-operated spray to modern oxygen rebreathers.

30 SKULPTURHALLE BASEL

WWW.SKULPTURHALLE.CH

MITTLERE STRASSE 17, 4056 BASEL | T +41 (0)61 261 52 45

TUE-FRI 10-17 H; SAT, SUN 11-17 H

CHF 10.-/5.-

TRAM 3 > SPALENTOR OR BUS 30/33 > BERNOULLIANUM



This is one of the largest collections of plaster casts of ancient sculptures. Its complete reconstruction of the sculptures from the Parthenon in Athens is the only one of its kind.

31 SPIELZEUGMUSEUM, DORF- UND REBBAUMUSEUM RIEHEN

WWW.SPIELZEUGMUSEUMRIEHEN.CH

BASELSTRASSE 34, 4125 RIEHEN/BASEL | T +41 (0)61 641 28 29

MON, WED-SUN 11-17 H | CHF 7.-/5.-

TRAM 6 > RIEHEN DORF



The three departments of the Museum of Riehen are housed in the 17th-century Wettsteinhaus, a protected monument and an idyllic setting for one of the leading collections of European toys. The Village Museum shows everyday life in Riehen around 1900. The Wine Cellar demonstrates the importance of winegrowing for Riehen and its surroundings.

TEMPO, TEMPO. SMALL FAST CARS >22.01.2012

32 SPORTMUSEUM SCHWEIZ

WWW.SPORTMUSEUM.CH

REINACHERSTRASSE 1-3, 4142 MÜNCHENSTEIN | T +41 (0)61 261 12 21

MON-FRI 14-17 H; GROUPS ALWAYS ON REQUEST; SINGLE ENTRIES:

PAY AS MUCH AS YOU LIKE

TRAM 10, 11 > BASEL DREISPITZ, TRAM 16, BUS 36 > LEIMGRUBENWEG,

CA. 10 MINUTES' WALK



The Swiss Sports Museum conserves and communicates the cultural heritage of Swiss sports. This is one of the largest collections on the history of sport.

33 VERKEHRSDREHSCHLEIBE SCHWEIZ UND UNSER WEG ZUM MEER

WWW.VERKEHRSDREHSCHLEIBE.CH

WESTQUAISTRASSE 2, 4057 BASEL | T +41 (0)61 631 42 61

MARCH–NOV.: TUE–SUN 10–17 H; DEC.–FEB.: TUE, SAT, SUN 10–17 H

CHF 6.–/4.–

TRAM 8 > KLEINHÜNINGEN



A shipping museum focusing on cargo and current modes of transport, all rolled into one: water, rail, road and air. Looking across frontiers, the display shows seagoing vessels flying the Swiss flag and passenger transport by river from Basel.

34 VITRA DESIGN MUSEUM

WWW.DESIGN-MUSEUM.DE

CHARLES-EAMES-STRASSE 1, D-79576 WEIL AM RHEIN | T +49 (0)7621 702 32 00

MON–SUN 10–18 H | EUR 8.00/6.50

BUS 55 FROM BASEL CLARAPLATZ > VITRA OR TRAIN FROM BASEL

BADISCHER BAHNHOF > WEIL AM RHEIN AND 20 MINUTES' WALK



The Vitra Design Museum, housed in a building by Californian architect Frank Gehry, is one of the world's leading museums of industrial furniture design and architecture. Along with a changing programme of exhibitions, the Vitra Design Museum organizes workshops and issues publications as well as special-edition pieces.

RUDOLF STEINER – ALCHEMY OF THE EVERYDAY > 01.05.2012

Rudolf Steiner was one of the most original and provocative thinkers of the 20th century. Not only did he found the anthroposophy movement, but he also made his mark as a publicist, teacher and philosopher. He also left an extensive portfolio of creative work based on the ideal of a "Gesamtkunstwerk" – a total work of art in which art and life fused together. This first comprehensive retrospective also refers to other artists and designers such as Joseph Beuys, Wassily Kandinsky, Olafur Eliasson and Konstantin Grcic, illustrating the great influence of the work of Steiner.

GERRIT RIETVELD – THE REVOLUTION OF SPACE 17.05.–16.09.2012

Dutch architect and designer Gerrit Rietveld was one of the most important representatives of classical modernism. He created icons such as the Red Blue Chair and the Rietveld Schröder House, transferring the rigorous compositions of Piet Mondrian and other members of the De Stijl movement into objects and space. The exhibition seeks to shed light on Rietveld's personal and professional environment, inspiration and influence.

PHOTO©: COLLECTION RIETVELD SCHRÖDER ARCHIVE, UTRECHT / PROLITTERIS (2011), ZÜRICH



Gerrit Th. Rietveld with a model of the "kernhuis" (1941)

POP ART DESIGN. ICONS OF CONSUMERISM 28.09.2012–03.02.2013

Inspiring each other mutually, art and design of the Pop era developed a visual language that shapes the world of media and consumption until today. The exhibition traces this dialogue with key works of artists such as Andy Warhol, Jasper Johns, Roy Lichtenstein or Claes Oldenburg and of designers like George Nelson, Ettore Sottsass, Gaetano Pesce or Olivier Mourgue. This is a cooperation of the Vitra Design Museum with the Louisiana Museum of Modern Art.

© GEORGE NELSON & ASSOCIATES / VITRA DESIGN MUSEUM



George Nelson: Marshmallow (1956)

SPECIAL EVENTS

BASEL MUSEUMS NIGHT: 13.01.2012, 18.01.2013

ART BASEL. THE INTERNATIONAL ART SHOW:

13.–17.06.2012, 12.–16.06.2013

FONDATION BEYELER: MAX ERNST. RETROSPECTIVE

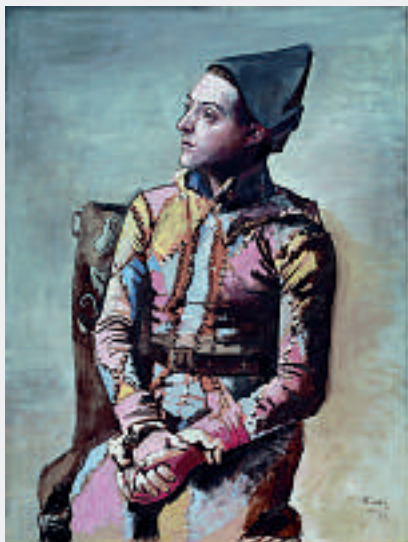
23.01.–05.05.2013

SCHAULAGER STEVE MCQUEEN 02.–07.2013

KUNSTMUSEUM BASEL: PICASSO. A RETROSPECTIVE FROM THE

BASEL COLLECTIONS 17.03.–07.07.2013

© 2011, PROLITTERIS, ZÜRICH



*Pablo Picasso: Arlequin assis (1923)
Kunstmuseum Basel*


PHOTO: ROBERT BAYER © 2011, PROLITTERIS, ZÜRICH




Snow Flowers (1929), Fondation Beyeler

For additional information please visit www.museenbasel.ch

.....
KEY TO SYMBOLS
.....


 FREE ADMISSION TO PERMANENT AND MOST SPECIAL EXHIBITIONS WITH THE UPPER RHINE MUSEUMS-PASS, WWW.MUSEUMSPASS.COM

 FREE ADMISSION TO PERMANENT AND MOST SPECIAL EXHIBITIONS WITH THE SWISS MUSEUM PASS WWW.MUSEUMSPASS.COM

 WHEELCHAIR-ACCESSIBLE

 WHEELCHAIR USERS, PLEASE CONTACT MUSEUM IN ADVANCE

 NO WHEELCHAIR ACCESS TO TOILET
.....

 **BASEL TOURISMUS** TOURIST AND HOTEL INFORMATION INSIDE THE STADTCASINO ON BARFÜSSERPLATZ;
T +41 (0)61 268 68 68, F +41 (0)61 268 68 70
INFO@BASEL.COM, WWW.BASEL.COM
.....

museen basel à discrétion

.....
**48 Hours –
1 Passport**
.....

WWW.MUSEUMSPASS.COM
WWW.MUSEENBASEL.CH

.....
IMPRINT

PUBLISHER: BASEL MUSEUM SERVICES, P.O. BOX 1556, 4001 BASEL, SWITZERLAND;
T +41 (0)61 267 84 01; INFO@MUSEENBASEL.CH. DESIGN: WOMM WERBEAGENTUR AG,
BASEL. TITLE PICTURE: IN THE EXHIBITION "A MIND OF THEIR OWN", MUSEUM DER
KULTUREN BASEL, © DEREK LI WAN PO; PRINTED BY BIRKHÄUSER+GBC AG, REINACH BL.
COPY DEADLINE: 29 AUGUST 2011. © BASEL MUSEUM SERVICES, 2011.
PHOTOGRAPHS: © INDIVIDUAL MUSEUMS. INFORMATION SUBJECTS TO CHANGE.
.....





time for
a change

Pure Aveda Hair & Spa
Bäumleingasse 14, 4051 Basel
+41 61 273 77 73

pure@pureaveda.ch
pureaveda.ch
facebook.com/pure.aveda.switzerland


pure

HAIR & SPA

AVEDA